

Novatex

Butt-end sewing machine



Novatex butt-end sewing machine on movable stand

for light to medium fabrics such as
cotton, knit-wear, tricot, non-wovens,
denim, fleece materials, airbag-material,
synthetic fibers, plastic materials, etc.

Seam width appr. 12mm (1/2")

Powerful fabric transport

- compact cutting device
(short distance between cutter and needle)
- dry and wet

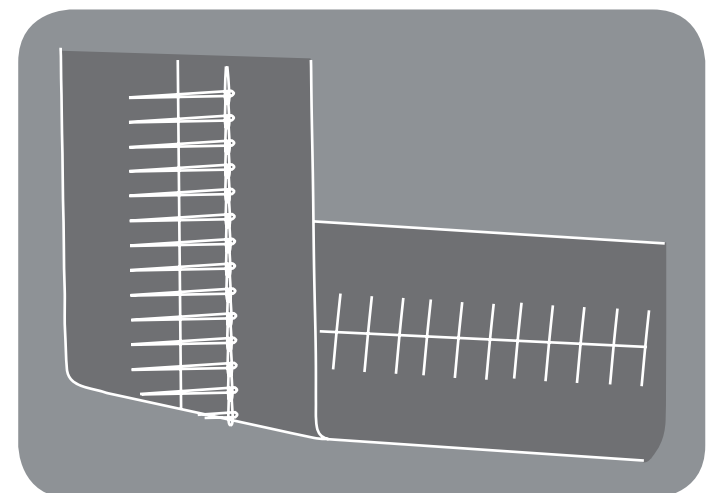
Available voltages:

400 V three-phase

42 V three-phase

230 V single-phase

pneumatic motor possible



Technical changes reserved (June 2009)

T: ++49 (0) 2403 / 23371

F: ++49 (0) 2403 / 24897

e-mail: info@dohle.de

www.dohle.de

Dohle GmbH & Co. KG

Zechenstr. 130

D-52249 Eschweiler, GERMANY